

Erosion Analysis of Fındıklı Creek catchment (Northwest of Turkey) using GIS based on RUSLE (3D) Method.

Recep Efe *
Deniz Ekinci **
İsa Cürebal *

* University of Balıkesir, Faculty of Art and Science, Department of Geography, 10145 Balıkesir – TURKEY

** University of Istanbul, Faculty of Art, Department of Geography, Istanbul - TURKEY

SUMMARY

Soil erosion by water is one of the major causes of land degradation in Turkey. But, the problem has not yet been treated in detail although it affects vast areas. The aim of this study is to predict annual soil loss using the Revised Universal Soil Loss Equation (RUSLE Version 1.06) to determine the erosion hazard in the area. This study was conducted at in Fındıklı Creek watershed which is located on the northern part of Edremit Gulf in the northwest of Turkey. For this purpose in order to determine controlling factors and find out the rate of potential erosion risk, Geographical Information Systems (GIS) based Revised Universal Soil Loss Equation (RUSLE) model was used. All factors used in the RUSLE were calculated for the watershed using local data. RUSLE-factor maps were made. According to result of this study five erosion risk classes which are low, slight, moderate, high, severe were defined. The mean values of the R-factor, K-factor, LS-factor, C-factor and P-factor were $305 \text{ km}^2 \text{ h}^{-1} \text{ a}^{-1}$ (MJ/ha/year), $0.55 \text{ Mg h MJ}^{-1} \text{ mm}^{-1}$ (ton/ha/year), 15.50, 0.07 and 0.90 respectively. The mean value of the annual average soil loss was assigned to be 66.5 tons per year per hectare. There is more erosion in the upland on the north and step slopes in the west of Fındıklı creek watershed.

Keywords : Soil Loss, Erosion, RUSLE (3d), Geographic Information Systems, Remote Sensing, Fındıklı Creek Watershed

INTRODUCTION

River catchments are dynamic and vulnerable systems that can change markedly when exposed to human impact. Changes induced since human settlements in Anatolia are of particular interest because impacts can be almost impossible to reverse. A measure of catchment degradation may be determined using different techniques such as (RUSLE) Revised Universal Soil Loss Equation. Physical characteristics and human activities affect the rate of sediment infill within their catchments, including the erosive power of rainfall, the intrinsic susceptibility of the soils to erosion, as well as the combined effect of slope angle and length. Sediment yield from a watershed is an integrated result of all water erosion and transport processes occurring in the entire contributing area [17]. The total sediment yield thus depends on both erosion at the various sediment sources such as crop, range, and forest lands, and the efficiency of the system to transport the eroded material out of the watershed [38]. The potential for soil erosion varies depending on the properties of the watershed, geomorphology, the soil characteristics, the local climatic conditions, and the land use and management practices implemented on the watershed. RUSLE, with great acceptance and wide use, is simple and easy to parameterize, and requires less data and time to run than most other models dealing with rill and interrill erosion [15]. The

combined use of Geographic Information System (GIS) and erosion models has been shown to be an effective approach to estimating the magnitude and distribution of erosion [19-20-24-42]. Erosion and spatially distributed sediment delivery in a watershed has been modeled by [11] based on USLE and the travel time concept. This approach was incorporated into a GIS by Jain and Kothyari [14]. The identification of the spatially distributed sediment sources makes possible the implementation of special conservation efforts on these source areas [35].

A small coastal catchment, Fındıklı Creek, located north of Edremit Bay, NW of Turkey, was selected for soil erosion analysis, using the Revised Universal Soil Loss Equation in combination with GIS.

DESCRIPTION OF THE STUDY AREA

The Fındıklı creek basin is located 482050 - 488550 East and 4378850 - 4395700 North (UTM Zone 35N – WGS84) coordinates on the north of the Gulf of Edremit, on the northwest of Turkey (Figure 1). The study area is approximately 44.20 km² in size and consists of various topographical features such as flat, rolling, hilly and mountainous areas. The total length of the tributaries in the catchment is 93.6 km and density is 2.11 km/km².

The geology of study area can be broadly divided into metamorphic rocks in the middle part, and sedimentary rocks in the south and north. Generally metamorphic rocks such as crystallized limestone belonging to Paleozoic era occur on the north of the basin. Metamorphic rocks like metagabro, marble and gneiss belong to pre-Jurassic period occur in the area. Upon these main rocks, contact metamorphic rocks like hornfels, granite and wollastonite types and Jurassic rocks like granodiorite, conglomerate, metagraywacke and siltstone occur. In the lower parts of the basin, there are fluvial deposits formed mostly in Quaternary period [5]. The area has a very diverse environment, with an altitudinal variation from 0 meter at sea level in the estuary of Fındıklı creek to the uplands 1774 m (Karataş T.) above sea level on the peak of the Kaz (İda Mt.) Mountain. This area has various microenvironments, partly reflecting its geological, geomorphological, pedological and biogeographical diversity.

In Fındıklı creek catchment, the topography largely consists of a series of deep cut valleys and steep slopes. When traveling northwards up the mountain, the topography becomes very rugged as they become narrow gorges with few areas suitable for either cultivation or habitation. Before reaching Kaz mountain peak, the topography becomes varied and spectacular, with steep hills and cliffs. The slope gradient in Fındıklı Creek watershed increases in the uplands of the basin; however, they decrease in lower parts. In the most part of the study area, the gradient is higher than 24° C.

The study area is in Mediterranean climate in macroclimate types. According to the data obtained from Edremit meteorological station, mean annual temperature is 15.7 °C. Mean temperature never goes below 0 °C. However, the temperature decreases below 0 °C from time to time (14 days in the year). The coldest month is January and the temperature is approximately 6.7 °C. In summer months characterizing hot period, the mean temperature is 25.7 °C in August. The highest mean temperature is 32, 4 °C in August; and the lowest mean temperature is 3.5 °C in January. The maximum temperature is 40 °C in July and the minimum temperature is -8 °C in January, in the year 1973.

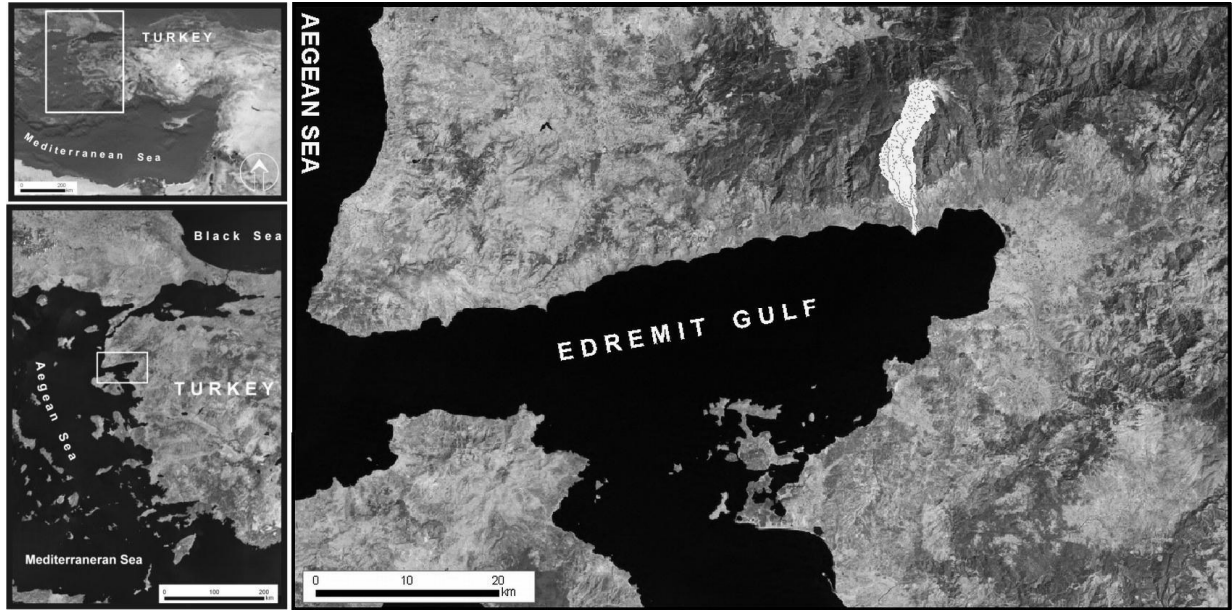


Figure 1: Location of Fındıklı Creek Catchment

The mean annual rainfall vary from about 650 mm on the southern part to over 1200 mm on the Kaz mountains on the north. Annual average rainfall is 659.1 mm and the most of this precipitation occurs in winter months which are parallel to the Mediterranean macroclimate character. In this case, while the total precipitation of 3 months in winter period is 328.2 mm, but the area receives only 22 millimeters rainfall in summer period (June, July, and August).

The mean number of days with snow cover may reach 1 per year. Although winds from the east and south-east still dominate, other directions are observed with significant frequency. Winds shift direction in the year, but direction is much more variable during winter.

The dominant wind direction is easterly in winter and southeasterly in summer and the mean wind speed is 2.2 m/sec. Also in the coastal zone, NE directional etesian winds blow out over the area in the period from May until September. Average speed of southeasterly winds is 4.5 m/sec.

Annual average relative humidity is 63%. Maximum relative humidity values usually occur during winter period. The absolute humidity in winter months increases up to 70%, but it decreases in summer months to 49%.

According to Thornthwaite [37], the study area was classified as (c2b2 s2b3), which is semi humid, second- degree mesothermal, under a sea climate effect and has a strong water deficit during summer.

The soils are generally entisols and inceptisols (taxonomy classification) at the higher altitudes. Vertisols occur on the lower parts on the south. The soils are mostly coarser textured and shallower. Four types of soil textures were determined such as, clayey, silty, loamy and sandy soils. These properties of the soil have an importance in determining susceptibility of the soil to erosion. Degraded lands remain with little vegetation cover. But areas dens in vegetation are substantially richer in enclosures than in open areas,

Forest and forage generally cover the northern part of the study area, while dry farming and forage are common in the southern part of the Findıklı creek catchment.

Most people in the area engaged in agricultural activities. Almost all the cultivation takes place in the southern part. There is scattered cultivation in the eastern half of the area with slopes greater than 15 % where the soils are inceptisols and vertisols. There is severe erosion taking place in the eastern part of the catchment. The remainder of the area is used for grazing with large numbers of cattle, sheep and goats being herded on the area, which is almost completely denuded of grass and with very little cover.

MATERIALS and METHODS

Determining the intensity, amount and distribution of erosion has a big importance because of necessity in where and what kind of cautions should be taken. For this purpose, many different techniques are being discovered in order to estimate and calculate the carried soil amount [8-9-10]. The Universal Soil Loss Equation (USLE) [41] or the revised version of USLE (RUSLE) [32] is often used to predict rainfall erosion in landscapes using GIS.

In this study, Revised Universal Soil Loss Equation RUSLE 3d technique was used, because of its being an enable application to give verisimilitude results in quality and quantity and for detailed evaluation of the factors affecting erosion in computer technology. Modeling soil erosion by RUSLE a functional model derived from the analysis of intensive soil erosion data, has seen wide application in long-term water erosion prediction [32].

Required GIS data layers included precipitation, soil characteristics, elevation, and land use. Current cropping and management practices and selected, feasible, future management practices were evaluated to determine their effects on average annual soil loss. Substantial reduction in water erosion can be achieved when future conservation support practices are applied. In order to determine the potential erosion risk zones and these zones' being classified in the study area, by the improvement of Universal Soil Loss Equation (USLE) [39-40-41]; "Revised Universal Soil Loss" [16-18-19-23-29-30-31-32-36].The DEM was imported to the ArcInfo grid format. The improved TIN was then converted back to a 10 m grid.

The RUSLE/GIS methodology permits calculation of potential soil loss from sheet and rill erosion for rangelands. The RUSLE equation calculates potential erosion (A) as follows:

$$A = R \cdot K \cdot SL \cdot C \cdot P$$

A : Average soil loss (ton / ha / year)
R : Rainfall erosivity factor
K : Soil erodibility factor
SL : Slope length and slope steepness factor
C : Land cover and management factor
P : Support practice factor

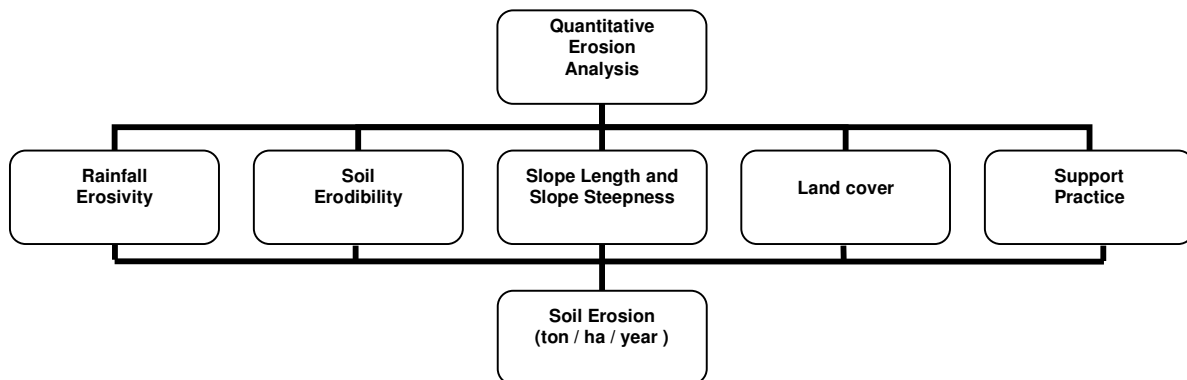


Figure 2: Evaluation of effected factors with RUSLE 3d

The 1/25000 scaled topographical maps of the study area are transformed into computer by scanning and digitized in this area. As a consequence of this process, three dimensional digital elevation model of the basin was formed. Land cover features are obtained in the consequence of classifying of Landsat 2006 ETM+ images. Soil properties are ordered according to the inventory prepared by Topraksu General Management. By taking into consideration of gradient, fauna and soil features that have effects on erosion; a sensitivity classifying was formed in terms of their effects on erosion. Basic maps being used during this application have 10 meter-resolution transformed in cellular data and their grid interrogations are made. Each equal dimensioned cell has values belong to many factors like slope by taking into consideration of its position; gradient, distance, land cover and soil. The notation of these values is prepared in nominal and ordinal data types. Each of these data put through a cellular based local analysis and results are evaluated separately.

In the consequence of the analysis of findings in the study area, four different potential erosion risk degrees are determined. The areas of these risk degrees and their distributions are mapped. Moreover, annual soil loss is calculated per hectare and data used to develop maps and tables.

SOIL LOSS EQUATION FACTORS IN THE FINDIKLI CREEK WATERSHED

1. RAINFALL EROSIVITY

R-factor values were calculated from over 25 years of rainfall intensity data from Edremit meteorological station for our study. Derived relationships between the R factor and MFI developed by Arnoldous [3] recommended using;

$$\text{Former; } MFI = \sum_{i=1}^{12} \frac{pi^2}{P}$$

$$\text{Latter; } R = (4.17 MFI) - 152.$$

Where MFI: Fournier Index (mm), “pi” is the average monthly precipitation (mm) and “P” represents the average annual total rainfall rate (mm).

Another topic which is necessary to express is, changing of precipitation in elevation zones. As it is mentioned that the meteorological station Edremit where we obtained the meteorological data is situated on 0 meters from sea level. But the elevation changes between 0 to 1774 meters in the study area.

Here, Schreiber's method was applied for determining the precipitation change according to the elevation. According to Schreiber's method;

$$Ph=Po+4,5xh [1].$$

In Schreiber's method, "Ph" is the average monthly precipitation (mm) and "Po" represents the amount of average monthly rainfall (mm) at chosen meteorological station, and, "h" is elevation of the place which the precipitation will be calculated [1].

$$\text{According to MFI} = \sum_{i=1}^{12} \frac{pi^2}{P} ;$$

$$\text{For } 0 -120 \text{ meters level; } MFI = \sum_{i=1}^{12} \frac{109,7^2 + 85,5^2 + \dots}{659,1} \Rightarrow MFI = 56,398$$

Latter; the R or Erosivity Factor Rainfall intensity data are difficult to collect and summarize. We use the modified Fournier's index [12] which has been shown well correlated to Arnoldous linear "R" [3] within this region. In addition to this when F was > 55 mm \Rightarrow (r2 = 0, 75), here [2-3-4-7-12-13-28-33].

$$\text{According to } R = (4.17 \text{ MFI}) - 152;$$

$$\text{For under 120 meters level; } R = (4.17 \times 85,75) - 152 \Rightarrow R = 205 \text{ MJ./ha/year.}$$

Table 1: Erosivity Factor to Elevation Levels (m)

Elevation Levels (m)	MFI	R
0–120	85.75	205.57
120–220	87.91	214.60
220–320	90.41	225.01
320–420	93.17	236.51
420–520	96.14	248.91
520–620	99.29	262.04
620–720	102.59	275.80
720–820	106.01	290.08
820–920	109.54	304.80
920–1020	113.17	319.90
1020–1120	116.87	335.34
1120–1220	120.64	351.06
1220–1320	124.47	367.03
1320–1420	128.35	383.22
1420–1520	132.28	399.61
1520–1620	136.25	416.18
1620–1720	140.26	432.90

1720–1774	141.47	437.94
-----------	--------	--------

2. SLOPE LENGTH AND SLOPE STEEPNESS FACTOR

The LS factor represents erodibility due to combinations of slope length and steepness relative to a Standard unit plot. The L and S factors are commonly combined as LS and referred to as the relief factor. LS factor was generated the L and S factors from a digital elevation model (DEM) within a GIS. The two inputs to the LS factor are cumulative slope length and slope steepness.

To incorporate the impact of flow convergence, the hillslope length factor was replaced by upslope contributing area [6-22-25-26].

The modified equation for computation of the LS factor in GIS in finite difference form for erosion in a grid cell representing a hillslope segment was derived by Desmet and Govers [6]. A simpler, continuous form of equation for computation of the LS factor at a point $r=(x,y)$ on a hillslope [20] is

$$LS(r) = (m+1) [A(r)/a_0]^m \times [\sin b(r)/b_0]^n$$

Where $A[m]$ is upslope contributing area per unit contour width, b [deg] is the slope, m and n are parameters, and $a_0 = 22.1m = 72.6ft.$, is the length and $b_0 = 0.09 = 9\% = 5.16$ degree is the slope of the standard RUSLE plot [27].

It's mentioned that the basic input data for the LS map are a digital elevation model, produced by the General Command of Mapping, Turkey (GCMT). Map of slope gradients has been derived from a digital elevation model.

The DEM was imported to the ArcInfo grid format. The improved TIN was then converted back to a 10 m grid. They are treated as water outflow and their removal avoids unrealistically high flow accumulation values. The technique for estimating the RUSLE 3d LS factor that will be applied in this study was proposed by Mitas and Mitasova [21].

Its mentioned that here LS is calculated using the ArcInfo hydrological extension and by producing flow accumulation grid as proposed by Desmet and Govers [6-36], from a DEM with a cell size of 10 m.

3. SOIL ERODIBILITY (K) FACTOR

The K factor represents both susceptibility of soil to erosion and the amount and rate of runoff. Soil texture, organic matter, structure, and permeability determine the erodibility of a particular soil. The 1:100,000 scale soil map prepared by the Turkish General Directorate of Rural Services (GDRS) Soil and water Resources National Information Centre in 2000 ([http.khgm.gov.tr](http://khgm.gov.tr)) was used. Soil structure affects both susceptibility to detachment and infiltration. Permeability of the soil profile affects K because it affects runoff. The soils of the study area are divided into five groups, pointing in each group to the texture. K values for various soil types in the study area are presented in table 2.

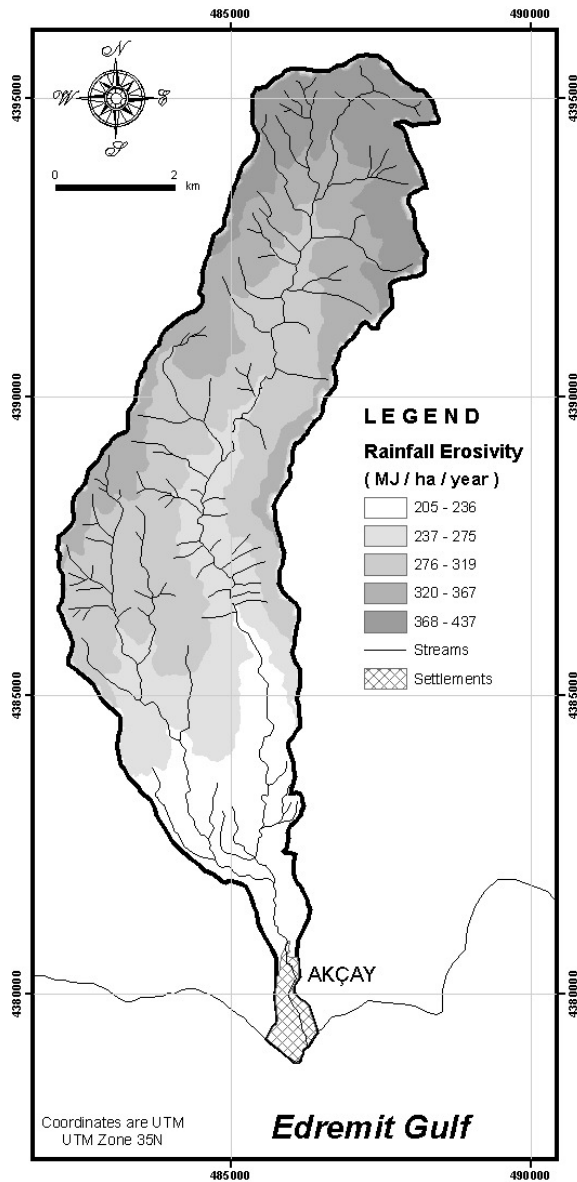


Figure 3: Rainfall Erosivity Factor distribution map

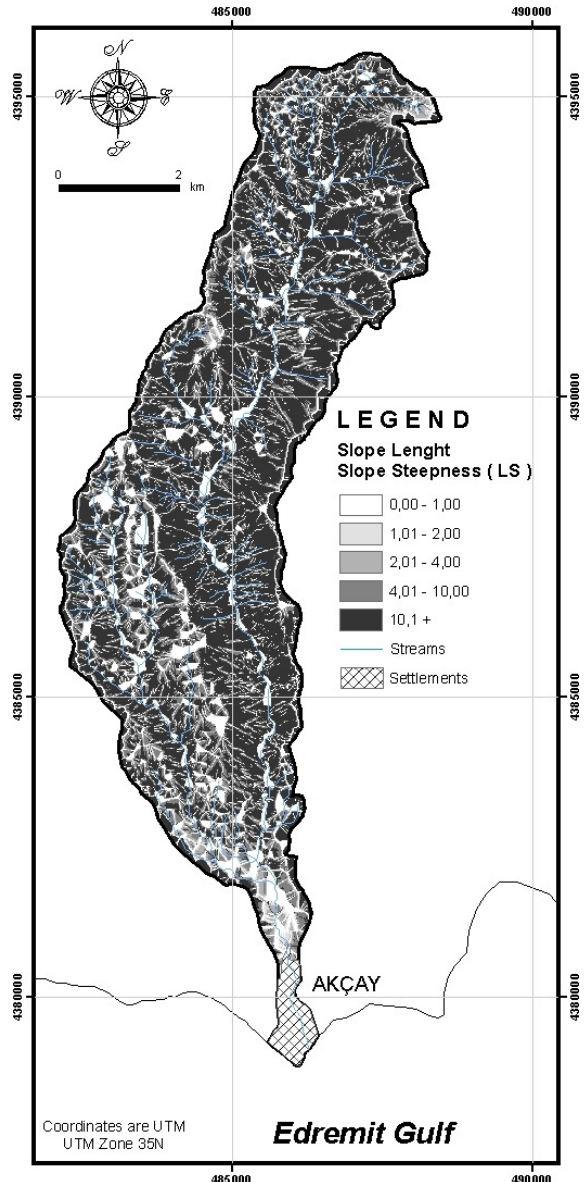


Figure 4: Slope Steepness & Slope Length Factor distribution

Table 2: Soil types and K values

Factor	Soil type	RUSLE 3d values
Soil (K) (tons per ha per unit)	Sand	0,1
	Sandy Loam	0,30
	Silt Loam	0,55
	Silt	0,6
	Clay Loam	0,65

4. LAND COVER AND MANAGEMENT (C) FACTOR

The C factor represents the effect of plants, soil cover, below-ground biomass, and soil-disturbing activities on soil erosion. The eleven spectrally separable, land cover classes identified; 1) Forest (Covered >40%), 2) Forest (Covered <40%), 3) Agriculture, 4) Barren, 5) Settlements.

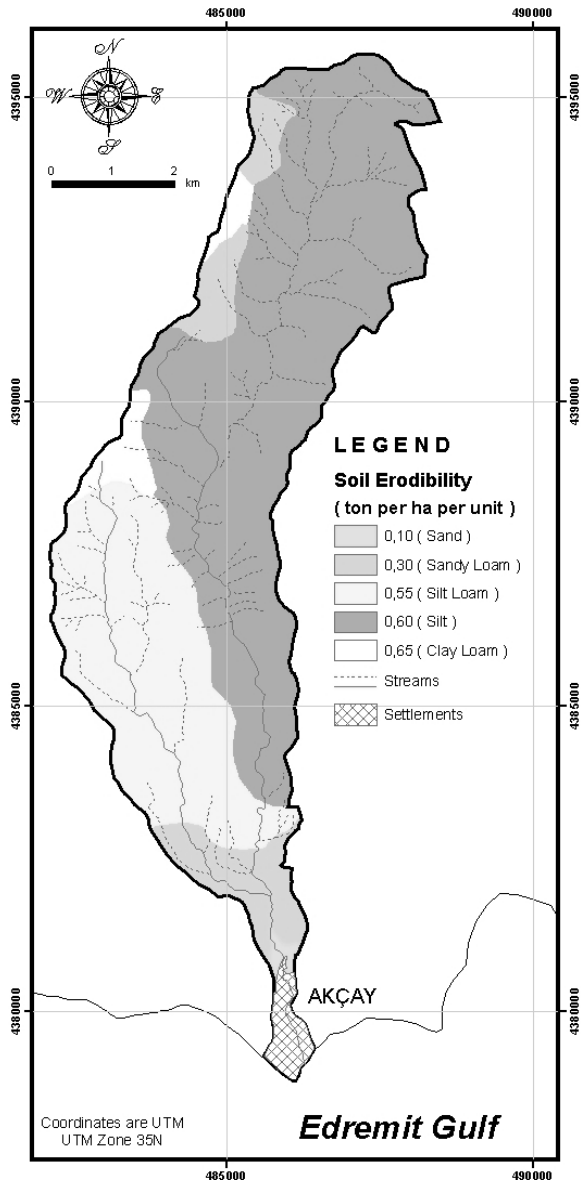


Figure 5: Soil Erodibility Factor distribution Map

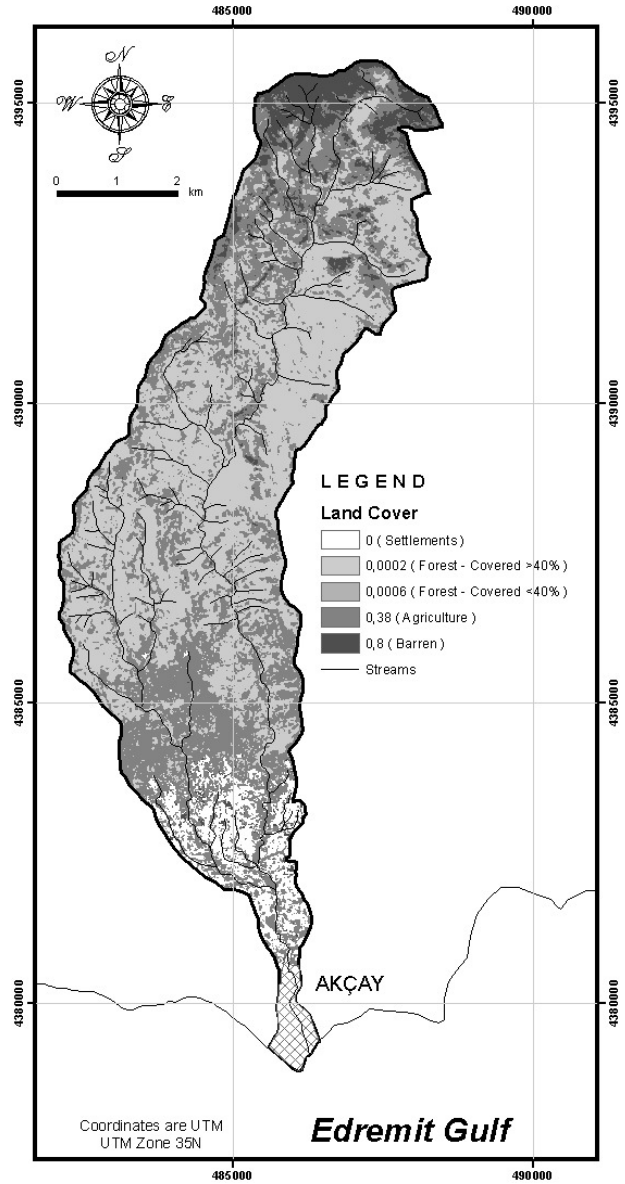


Figure 6: Landcover factor distribution map

Table 3: Land Cover Factor Properties

Factors	Classification	RUSLE 3d values
Land cover (C) (dimensionless)	Forest (Covered >40%)	0,0002
	Forest (Covered <40%)	0,0006
	Agriculture	0,38
	Barren	0,8
	Settlements	0

5. SUPPORT PRACTICE (P) FACTOR

The supporting effects of practices like contouring, strip cropping, and terraces are described by the P factor. An overall P factor was computed as a product of P factors for individual support practices that are used in combination to reduce erosion [34]. Information on the support practices or P factor values in the catchment (e.g. contour intervals, terracing) was collected during fieldwork.

Parameter P (support practice factor) was identified in excursion studies. This parameter refers to any practices serving to control erosion, mainly by reducing surface runoff (e.g. terracing, buffer strips, and tillage methods). According to RUSLE hand book [32], the only RUSLE support practice applicable to conditions in study area is contour tillage.

P factor values extracted for the purpose of applying the RUSLE 3d in Fındıklı Creek Basin are listed in Table 4 in below.

Table 4: Support Practice Factor Values

Factor	Classification	RUSLE 3d values
Support Practice (P) (dimensionless)	Forest (Covered >40%)	1
	Forest (Covered <40%)	1
	Agriculture	0,19
	Barren	1
	Settlements	0

Field examination of the land cover-mapping units revealed that the only form of erosion control being practiced in the catchment is on the “Cultivated land - temporary commercial” – type - mapping unit. There were examples of contour tillage on these mapping units, as it is illustrated the Figure 7 below taken of one particular site of commercial farming. The rest of the Fındıklı Creek catchment was assigned the P factor value of 1, indicating no physical evident of erosion control in these areas.

RESULTS

In light of data gained as a result of collectively evaluation of different factors by using RUSLE 3d method in Fındıklı Creek Catchment; deduced in two different results. The first one is determining of potential erosion risk and the other one is estimating annual soil loss. In the first of them, five different erosion risk classes are determined (Figure 8). According to this data,

approximately in 89% of the of study area, erosion risk is not so much (Table 5). But the erosion risk is high on 7.56 % of the catchment area. Five erosion risk classes have been determined by taking into account the soil erodibility

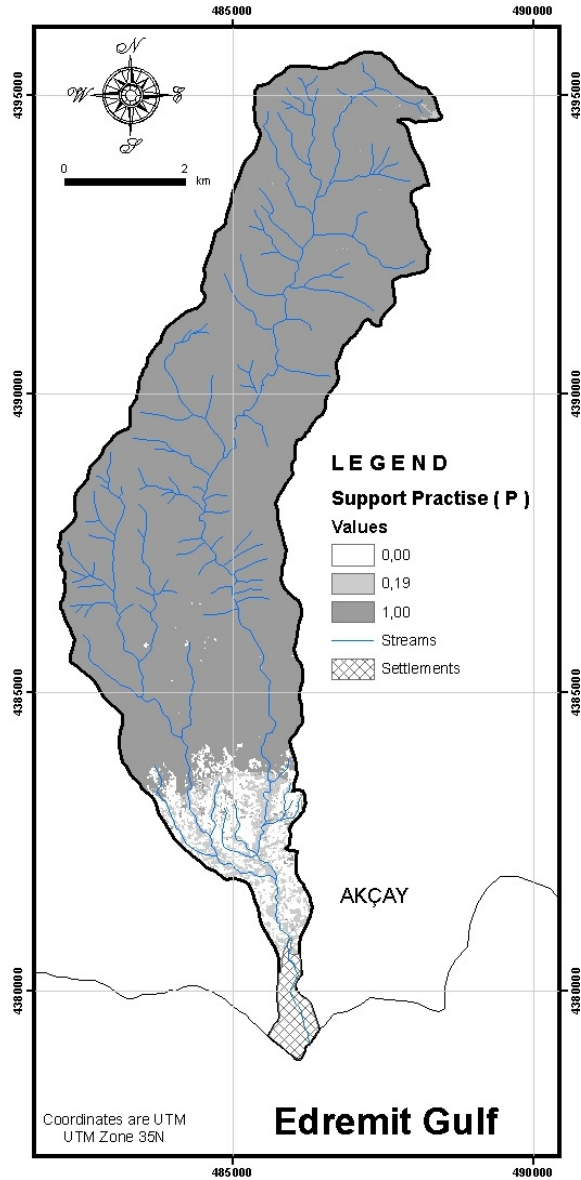


Figure 7: Support Practice Factor Distribution Map

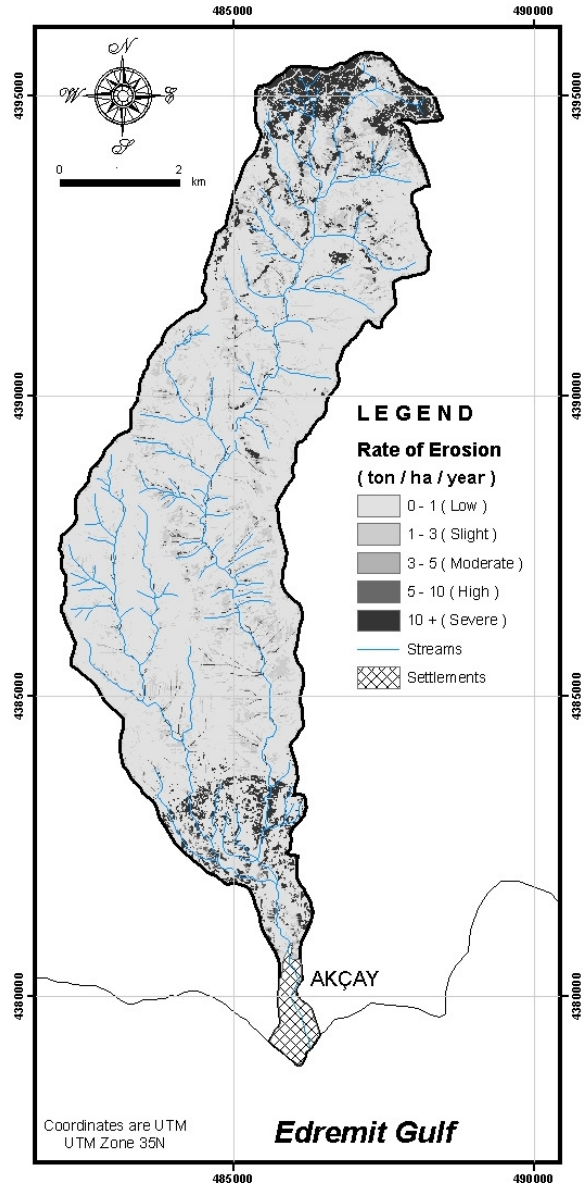


Figure 8: The Classified Mean Annual Soil Loss Distribution Map

It is estimated that the soil loss of a 78,50 % part of the catchment is less than the value of 0-1 ton/ha/year (Table 5). Approximately 1,01 - 3 tons/ha/year loss is discussed in %11, 07 of the catchment. In remain parts of the study area, more than five tons soil loss occurred each year. Although the study area has high gradient values, it has low erosion risk basin feature because of the existence of other erosion preventing factors such as dens vegetation cover and low gradient

slopes. The density of the vegetation has a role decreasing the effect of high gradient values on erosion intensity. Olive agriculture is the only agricultural activity in the study area. It is common on the lowlands and low gradient slopes of the basin. On this account, the effect of agricultural activities on erosion is indeed low. The areas in which erosion intensity is higher in the basin are open areas that have no land cover, and parts which have high valley density and gradient values, and the areas in where granular and fine grained soils occur.

Table 5: Mean Annual Soil Loss Quantity (ton / ha / year) and Rate (%)

Area (km ²)	Soil Loss (ton/ha/year)	Erosion Risk	Rate (%)
34.68	1	Low	78.50
4.89	3	Slight	11.07
0.69	5	Moderate	1.56
0.58	10	High	1.31
3.34	>10	Severe	7.56
44.18			100.00

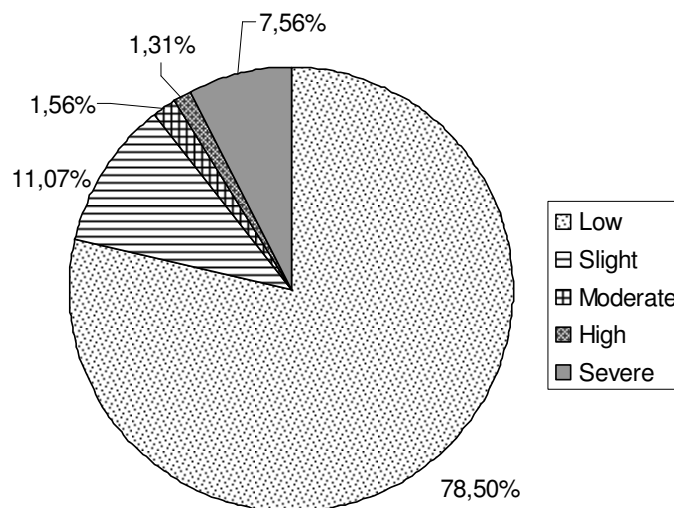


Figure 9: Mean Annual Soil Loss Quantity Rate (%)

CONCLUSIONS

This study describes the application of the RUSLE model, to quantify soil loss in Fındıklı Creek basin located at northwestern part of Turkey, using the GIS skill. The strategy adopted here is, firstly, to calculate six RUSLE factors using distributed GIS data (e.g. soil, land cover, and DEM) to adequately represent the surface characteristics and, secondly, to estimate spatial distribution of soil loss in the basin.

The conclusions of the present study are as follows:

- Erosion intensity does not go parallel with slope inclination.

- Erosion is more effective not only on the steep slopes with poor vegetation cover but also high on barren lands.
- It is identified that in rolled smooth land condition, clayey soil are more erodible than sandy soil.
- Erosion is varying from moderate to severe on the 10, 43 % of the study area.

Another important conclusion derived from this research is that the RUSLE can be successfully used for erosion prediction.

REFERENCES

- [1] Ardel, A., Kurter, A. and Dönmez, Y. (1969) Applied Climatology, Publication of Istanbul Univ. İstanbul.
- [2] Arnoldous, H. M. J. (1977) Methodology used to determine the maximum potential average annual soil loss due to sheet and rill erosion in Morocco, FAO Soils Bulletin, 34, 39-51.
- [3] Arnoldous, H. M. J. (1980) An approximation of the rainfall factor in the USLE. In: De Boodt M., Gabriels, D. (Eds.), Assessment of Erosion. Wiley, Chichester, England, pp. 127–132.
- [4] Bayramin, İ., Erpul, G. and Erdogan, H. E. (2006) Use of CORINE methodology to assess soil erosion risk in the semi-arid area of Beypazarı, Ankara, Turkish J. Agric For, 30, 81-100.
- [5] Bingöl, E. (1969) Geology of Southeastern part of KazdagKazdağ. Journal of MTA no. 72, pp. 110-124. Ankara.
- [6] Desmet, P. J. J. and Govers, G. (1996) A GIS procedure for automatically calculating the USLE LS factor on topographically complex landscape units. Journal of soil and water conservation, 51, 427-433.
- [7] Diyatoto, N. (2004) Estimating RUSLE's rainfall factor in the part of Italy with a Mediterranean rainfall regime, Hydrology and Earth System Sciences, 8-1, 103-107.
- [8] Doe, W. W. III, Jones, D.S., Warren, S.D. (1999) The Soil Erosion Model Guide for Military Land Mangers: Analysis of Erosion Models for Natural and Cultural Resources Applications. Technical Report ITL 99-XX. U.S. Army Engineer Waterways Experiment Station.
- [9] Doğan, O. and Küçükçakar, N. (1994) Methodolgy of Erosion Mapping. Köy Hizmetleri Research Instituted, Ankara.
- [10] Ekinci, D. (2006) The Effect of Valley Networks on Erosion and a Sample for Using GIS Based Soil Erosion Risk Model, International Soil Meeting (ISM) on "Soils Sustaining Life on Earth, Managing Soil and Technology, May, 2006, Şanlıurfa, Turkey.
- [11] Ferro V., Porto, P. (2000) A sediment delivery distributed (SEDD) model. Proc. ASCE, Journal of Hydrologic Engineering, Vol. 5, 4, 411-422.
- [12] Fournier, F. (1960) Climat et érosion. Ed. Presses Universitaires de France. Paris.
- [13] Gabriels, D. (1993) The USLE for Predicting Rainfall Erosion Losses, ICTP-SMR, 705-3, Trieste.

- [14] Jain, M. and Kothyari, U.C. (2000) Estimation of soil erosion and sediment yield using GIS. *Hydrol. Sci. J.* 45(5), 771-786
- [15] Jones, D.S., Kowalski, D.G. and Shaw, R.B. (1996) Calculating Revised Universal Soil Loss Equation (RUSLE) estimates on Department of Defense Lands: A review of RUSLE factors and U.S. Army Land Condition-Trend Analysis (LCTA) Data Gaps. Center for Ecological Management of Military Lands. Department of Forest Science, Colorado State University, Fort Collins, Colorado.
- [16] Knijft, V. J. M., Jones, R. J. A. and Montanarella, L. (1999) Soil erosion assessment in Italy, European Soil Bureau.
- [17] Lane, L.J., Kidwell, M.R. and Wertz, M.A. (2000) Watershed sediment yield and rangeland health. *International Journal of Sediment Research* 15:51-59.
- [18] Lufafa, A., Tenywa, M.M., Isabirye, M., Majaliwa, M.J.G. and Woome, P.L. (2003) Prediction of soil erosion in a Lake Victoria Basin catchment using GIS-based Universal soil loss model. *Agricultural Systems* 76(2003):883-894.
- [19] Millward, A.A. and Mersey, J.E. (1999) Adapting the RUSLE to model soil erosion potential in a mountainous tropical watershed. *Catena*, 38, 109-129.
- [20] Mitsova, H., Hofierka, J., Zlocha, M. and Iverson, L.R. (1996) Modeling topographic potential for erosion and deposition using GIS. *Int. Journal of Geographical Information Science*, 10(5), 629-641. (reply to a comment to this paper appears in 1997 in *Int. Journal of Geographical Information Science*, Vol. 11, No. 6)
- [21] Mitas, L. and Mitsova, H. (1999) Spatial Interpolation. In: P. Longley, M. F. Goodchild, D. J. Maguire, D. W. Rhind (Eds.), *Geographical Information Systems: Principles, Techniques, Management and Applications*, GeoInformation International, Wiley, 481-492.
- [22] Mitsova, H., Hofierka, J., Zlocha, M. and Iverson, R.L. (1996) Modeling topographic potential for erosion and deposition using GIS. *Int. Journal of Geographical Information Science*, 10-5, 629-641.
- [23] Mitsova, H., Mitas, L., Brown, W.M. and Johnston, D. (1998) Multidimensional Soil Erosion / deposition Modeling and visualization using GIS. Final report for USA CERL. University of Illinois, Urbana-Champaign, IL.
- [24] Molnar, D.K. and Julian, P.Y. (1998) Estimation of Upland Erosion Using GIS. *Computers and Geosciences*. 24(2): 183-192.
- [25] Moore, I. and Burch, G. (1986a) Physical basis of the length-slope factor in the universal soil loss equation. *Soil Science Society of America Journal* 50, 1294-1298.
- [26] Moore, I. and Burch, G. (1986b) Modeling erosion and deposition: topographic effects. *Transactions of ASAE* 29-6, 1624-1640.
- [27] Moore, I.D. and Wilson, J.P. (1992) Length-slope factors for the Revised Universal Soil Loss Equation: Simplified method of estimation. *Journal of Soil and Water Conservation*, 47, 423-428.
- [28] Oduro - Afriye, K. (1996). *Rainfall Erosivity Map for Ghana*, Geoderma, Elsevier Science B.V., 1125, pp.6.

- [29] Renard, K.G., Foster, G.R., Weesies, G.A. and Porter, J.P. (1991) Revised Universal Soil Loss Equation (RUSLE), *Journal Soil Water Conserv.* 46, 30 -33.
- [30] Renard, K.G. and Ferreira, V.A. (1993) RUSLE model description and database sensitivity. *J. Environ. Qual.* 22-3,458-466.
- [31] Renard, K.G., Foster, G.R., Yoder, D.C. and McCool, D.K. (1994) RUSLE revisited: Status, questions, answers, and the future. *J. Soil and Water Conservation.* 49(3):213-220.
- [32] Renard, K.G., Foster, G.R., Weesies, G.A., McCool, D.K. and Yoder, D.C. (1997) *Predicting Soil Erosion by Water: A Guide to Conservation Planning with the Revised Universal Soil Loss Equation (RUSLE)*. USDA Agriculture Research Service. Agriculture Handbook No. 703. 384 p.
- [33] Renard, K.G. and Freimund, J.R. (1994) Using monthly precipitation data to estimate the R factor in the revised USLE. *J. Hydrology*, 157, 287-306.
- [34] Rijks, D., Terres, J.M. and Vossen, P. (1998) Agrometeorological applications for regional crop monitoring and productions assessment. EUR 17735 EN, 505pp.
- [35] Simms, A.D., Woodroffe, C.D. and Jones, B.G. (2003) *Application of RUSLE for Erosion Management in a Coastal Catchment, Southern NSW*. Faculty of Science Papers. Australia.
- [36] Sivertun A. and Prange, L. (2003) Non-point source critical area analysis in the Gisselo watershed using GIS, *Environmental Modelling & Software*, 18, 887–898.
- [37] Thornthwaite, C.W. (1948) An approach toward a rational classification of climate. *Geographic Review* 38:55-94
- [38] USDA-SCS. (1979) United States Department of Agriculture - Soil Conservation Service. *National Engineering Handbook, Sec. 4. Hydrology*.
- [39] Wischmeier, W.H., Smith, D.D. and Umland, R.E. (1958) Evaluation of factors in the soil loss equation, *Agric. Eng.* 39,458- 474.
- [40] Wischmeier, W.H. and Smith, D.D. (1965) *Predicting rainfall-erosion losses from cropland east of the Rocky Mountains: guide for selection practices for soil and water conservation*. Agricultural Handbook 282, US Dept. of Agric. Sci and Edu. Admin., Agric. Res., USA.
- [41] Wischmeier, W.H. and Smith, D.D. (1978) *Predicting Rainfall Erosion Losses: A guide to conservation planning*, USDA, Agricultural Handbook, 537, US Department of Agriculture, Washington, DC, USA.
- [42] Yitayew, M., Pokrzywka, S.J. and Renard, K.G. (1999) Using GIS for facilitating erosion estimation, *Appl. Eng. Agric.*, 15, 295–301.