

See discussions, stats, and author profiles for this publication at: <https://www.researchgate.net/publication/343655756>

PRESENCE OF PENICULUS FISTULA FISTULA AND LEPEOPHTHEIRUS ACUTUS FROM THE NORTH AEGEAN SEA, TURKEY

Article · August 2019

CITATIONS

0

READS

130

2 authors:



Ahmet Öktener

independant researcher

143 PUBLICATIONS 1,113 CITATIONS

[SEE PROFILE](#)



Dilek Türker

Balıkesir University

65 PUBLICATIONS 391 CITATIONS

[SEE PROFILE](#)

PRESENCE OF *PENICULUS FISTULA FISTULA* AND *LEPEOPHTHEIRUS ACUTUS* FROM THE NORTH AEGEAN SEA, TURKEY

Ahmet Öktener and Dilek Türker

Received: 31.10.2019 / Accepted: 01.12.2019

Abstract: The parasitic copepod, *Peniculus fistula fistula* Nordmann, 1832 is found on the caudal, ventral, pectoral, dorsal, anal, fins of garfish, *Belone belone* (Linnaeus, 1760), while *Lepeophtheirus acutus* Heegaard, 1943 on the dorsal body surface of common guitarfish, *Rhinobatos rhinobatos* (Linnaeus, 1758) in the North Aegean Sea, Turkey on 2017. This study presents a new locality as Aegean Sea for *Lepeophtheirus acutus* and a new host as garfish for *Peniculus fistula fistula* Nordmann, 1832 in Turkey. This study confirms third report of *Peniculus fistula fistula* Nordmann, 1832 in Turkey again.

Keywords: common guitarfish, garfish, *Lepeophtheirus acutus*, *Peniculus fistula fistula*, Turkey

Introduction:

The garfish, *Belone belone* (Linnaeus, 1760) (Beloniformes: Belonidae) is a fish species of important commercial value, distributed in Eastern Atlantic and Mediterranean Sea. It is carnivorous fish that feeds mainly on small fishes especially clupeids. It is pelagic-oceanic and oceanodromous fish (Froese and Pauly 2019).

Ten species of parasitic copepods (*Bomolochus bellones* Burmeister, 1833; *Bomolochus decapteri* Yamaguti, 1936; *Caligus belones* Krøyer, 1863; *Caligus elongatus* von Nordmann, 1832; *Caligus lacustris* Steenstrup and Lütken, 1861; *Caligus adanensis* Özak, Sakarya and

Boxshall, 2019; *Lepeophtheirus salmonis* Krøyer, 1837; *Lernaeolophus sultanus* Milne Edwards, 1840; *Metopocatacoteinus hirsutus* Hesse, 1871; *Nothobomolochus gibber* Shiino, 1957) from *Belone belone* have been listed by WoRMS Editorial Board (2019). In addition, Vidjak et al. (2008) reported *Peniculus fistula* ectoparasite on garfish in the Mediterranean Sea. *Bomolochus bellones* and *Caligus adanensis* was reported only for parasitic copepod fauna of garfish in Turkey (Öktener et al 2015, Özak, Sakarya and Boxshall 2019).

The common guitarfish, *Rhinobatos rhinobatos* (Linnaeus, 1758) (Rhinopristiformes: Rhinobatidae) is a demersal elasmobranch fish species. It is

Ahmet Öktener:

Bandirma Sheep Research Station
Department of Fisheries
Çanakkele Street 7km, Bandirma
Balıkesir 10200, Turkey

e-mail (for all authors):
ahmetoktener@yahoo.com

Dilek Türker:

Faculty of Science
Department of Biology
University of Balıkesir
Campus of Çağış
Balıkesir 10145, Turkey

carnivorous fish that feeds on benthic invertebrates, mainly crustaceans and small fishes; it occurs in Eastern Atlantic Ocean and Mediterranean Sea (Froese and Pauly 2019).

Two species of parasitic copepods (*Eudactylina rhinobati* Raibaut and Essafi, 1979; *Lepeophtheirus acutus* Heegaard, 1943) from the common guitarfish were listed by WoRMS Editorial Board (2019).

This study contributes new geographic distribution for *Lepeophtheirus acutus* and *Peniculus fistula fistula* and also confirms the occurrence of *Peniculus fistula fistula* in Turkish marine waters.

Materials and methods:

Thirteen specimens of garfish (32.5-46.5 cm in total length) were collected by fishing rod and 2 specimens of common guitarfish (95 and 97 cm in total length) by trammel net from the Edremit Bay (North Aegean Sea, Turkey) in 2014 and 2016. Specimens of copepods recovered from the hosts were fixed in 4% formaldehyde and preserved for long-term storage in 70% ethanol. They were cleared in lactic acid and their appendages were dissected out by using Wild M5, Leica M140 stereo microscope. Dissected parts were mounted on slides in glycerin-gelatine mounting medium. The photos were taken with the aid of Canon camera (EOS 1100D) connected to a microscope. The appendages were drawn with the aid of a camera lucida (Olympus BH-DA). All measurements are in millimeters. Scientific names, synonyms of the parasite and the host were checked through WoRMS Editorial Board (2019) and Froese and Pauly (2019). Identifications were done according to Boxshall (1986); Vidjak et al. (2008); Venmathi Maran et al. (2012); Moon and Choi (2014) for *Peniculus fistula* and Tang et al. (2013); Özak et al. (2018); Boxshall (2018) for *Lepeophtheirus acutus*.

Results and discussion:

Siphonostomatoida Burmeister, 1835
Caligidae Burmeister, 1835
Lepeophtheirus von Nordmann, 1832
Lepeophtheirus acutus Heegaard, 1943
(Figs. 1-7, Annexes)

Host: The common guitarfish, *Rhinobatos rhinobatos* (Linnaeus)

Infestation site: dorsal surface of body

Examined fish: 2

Infested fish: 2

Number of total parasite: 519 (449 female, 70 male)

Prevalence: 100%

Mean intensity: 260.5

Female morphology:

Cephalothoracic shield subcircular, longer 1.46 mm (1.39-1.53) than width 1.34 mm (1.28-1.4) and posterior margin of thoracic zone extending beyond posterior edges of lateral zone. Fourth pedigerous somite wider 0.29 mm (0.27-0.33) than length 0.16 mm (0.15-0.2) and distinctly separated from genital complex. Genital complex wider 0.77 mm (0.67-0.82) than length 0.68 (0.65-0.72), with slightly oblique of anterior margins and rounded posterolateral corners. Abdomen with 1-segmented, length 0.22 mm (0.18-0.26) is close to width 0.22 mm (0.19-0.25) and indistinctly separated from genital complex. Caudal ramus longer 0.054 mm (0.049-0.068) than wide 0.042 mm (0.033-0.048), with six plumose setae and row setules along distomedial margin. Egg sacs is 1.57 mm (1.46-1.71) long and 0.22 mm (0.22-0.24) wide. Antennule two-segmented; proximal segment longer than distal segment, bearing two posterodistal processes and 27 setae (25 plumose, two naked); distal segment slim, bearing 12 setae (two setae near posterodistal corner share a common base) and two aesthetascs. Antenna three-segmented, proximal segment bearing with spiniform process in posterior; middle segment with adhesion pad; distal segment produced strongly curved claw with seta

proximally and another seta in mid-section. Postantennal process slightly curved, with two setulose papillae in inner section of base and one setulose papilla in out of base. Mandible bearing 12 teeth in distomedial section. Maxillule composed of papilla bearing 3 unequal setae at dentiform process, anterior sclerite projects over base of dentiform process. Sternal furca with slightly divergent tines, apically rounded, shorter than box. Maxilliped three-segmented, proximal segment (corpus) and subchela consisting shaft and claw; proximal segment unarmed; claw with seta at base.

Male morphology:

Cephalothoracic shield subcircular, longer 0.93 mm (0.87-0.96) than width 0.81 mm (0.75-0.87). Fourth pedigerous somite wider 0.18 mm (0.16-0.19) than length 0.08 mm (0.069-0.099). Genital complex little wider 0.29 mm (0.27-0.31) than length 0.28 mm (0.25-0.31). Abdomen with 1-segmented, wider 0.15 mm (0.14-0.16) than long 0.13 mm (0.11-0.14). Caudal ramus longer 0.068 mm (0.059-0.074) than wide 0.05 mm (0.044-0.0588), with six plumose setae and row setules along distomedial margin. Antenna three-segmented, comprising coxa, basis and one-segmented endopod incorporating distal claw; coxa with corrugated adhesion pad on inner surface; basis with a large and a small corrugated pads; distal segment forming recurved claw and 2 unequal claw-like processes, plus 2 setae. Maxillule with corrugated pad and a small knob on dentiform process. Postural process elongated, with corrugated pad. Leg 5 with four plumose setae situated mid-laterally on genital complex. Leg 6 with one seta and two subequal, spiniform processes on distolateral corner.

Geographical Distribution:

Apamama Island, Gilbert Islands, western Pacific Ocean (Heegaard, 1943); Tropen-Aquarium Hagenbeck in Germany, Burger's Zoo in the Netherlands (Kik et al 2011); Okinawa-jima Island, Japan (Tang et al

2013); Campeche, in the southern Gulf of Mexico (Rodriguez-Santiago et al. 2016); North-eastern Mediterranean waters between Tuzla and Karataş (Özak et al. 2018); Moreton Bay, Queensland, Australia (Boxshall 2018).

Hosts:

Taeniura lymma (Heegaard 1943); *Carcharhinus amblyrhynchos*, *Carcharhinus melanopterus*, *Triaenodon obesus*, *Pteroplatytrygon violacea*, *Glaucostegus typus*, *Stegostoma fasciatum* (Kik et al. 2011); *Rhincodon typus*, *Mobula alfredi* (Tang et al. 2013); *Aetobatus narinari* (Rodriguez-Santiago et al. 2016); *Aetobatus ocellatus* and *Maculabatis astra*, *Himantura cf. astra* (Boxshall 2018); *Rhinobatos rhinobatos*, *Aetomylaeus bovinus* (Özak et al. 2018).

Remarks:

Lepeophtheirus acutus is very closely similar to *Lepeophtheirus rhinobati*. The main point of difference is that "accessory processes on spines 2 and 3 on distal margin of exopod of leg 1 only just extending beyond apex of spine" in *Lepeophtheirus acutus* according to Özak et al (2018). Although Özak et al (2018) found female abdomen about 1.8 times longer than wide in *Lepeophtheirus acutus*, abdomen length is close the width in this study. Especially, the morphological extrimities of mouth-parts of specimens found in this study have been compared to the findings presented by Özak et al (2018), Tang et al (2013). The morphology of specimens collected in this study was consistent with these literatures concerning *Lepeophtheirus acutus*.

Siphonostomatoida Burmeister, 1835

Pennellidae Burmeister, 1835

Peniculus Nordmann, 1832

Peniculus fistula fistula Nordmann, 1832

(Fig. 8, Annexes)

Host: The garfish, *Belone belone* (Linnaeus)

Infestation site: fins

Examined fish: 30
 Infested fish: 13
 Number of total parasites: 17
 Prevalence: 43.33%
 Mean intensity: 1.3

Geographical Distribution:

Peniculus fistula is reported from Mediterranean, Atlantic and Indo-Pacific, Adriatic Sea (Vidjak et al. 2008) and also Sea of Marmara (Öktener and Şirin 2019).

Hosts:

Zeus faber (Nordmann 1832), *Pseudoperca semifasciata* (Claus 1868); *Lampris guttatus* (Brian 1898); *Atherina boyeri*, *Diplodus vulgaris* and *Zeus faber* (Brian 1906); *Diplodus annularis* (Brian 1917); *Girella nigricans* and *Hypsypops rubicundus* (MacGinitie 1937, Wilson 1935); *Mullus barbatus barbatus*, *Mullus surmuletus*, *Capros aper* and *Pagellus erythrinus* (Delamare Deboutteville and Nunes Ruivo 1951); *Trachurus trachurus* and *Trachurus picturatus* (Candeias 1955); *Pagellus bogaraveo* and *Pagellus erythrinus* (Gooding 1957); *Synagrops microlepis* (Capart 1959); *Pagellus erythrinus* (Larraneta 1964); *Lithognathus mormyrus* (Zuniga and Suau 1967); *Anisotremus scapularis*, *Cheilotrema saturnum*, *Medialuna californiensis*, *Micrometrus minimus*, *Brachyistius frenatus*, *Hypsurus caryi*, *Atherinops affinis*, *Embiotoca jacksoni*, *Rhacochilus toxotes*, *Rhacochilus vacca*, *Phanerodon furcatus*, *Trachurus symmetricus* and *Anisotremus davidsonii* (Hobson 1971); *Cymatogaster aggregata*, *Embiotoca jacksoni*, *Paralabrax clathratus*, *Paralabrax nebulifer*, *Phanerodon furcatus* and *Hypsurus caryi* (Love and Moser 1983); *Xenistius californiensis* (Sikkel 1985); *Liza richardsonii*, *Pagellus erythrinus* and *Scorpius lineolata* (Boxshall 1986); *Prolatilus jugularis* (Sepúlveda et al. 2004); *Pagrus pagrus* (Ramdane and Trilles 2007); *Belone belone* (Vidjak et al. 2008); *Boops boops* (Zuniga and Suau 1967, Olmo 2008);

Coryphaena hippurus (Öktener 2008); *Pagellus bogaraveo* (Hermida et al. 2013a,b); *Chromis notata* (Moon and Choi 2014); *Cheilotrema fasciatum*, *Chromis crusma*, *Girella laevifrons*, *Hemilutjanus macrophthalmus*, *Isacia conceptionis*, *Mugil cephalus*, *Odonthesthes regia*, *Prolatilus jugularis* (Castro-Romero et al. 2016), *Mullus surmuletus* (Öktener and Şirin 2019).

Remarks:

Examination of the parasite specimens showed that they were *Peniculus fistula fistula* Nordmann, 1832 (Pennellidae) according to the general drawings and descriptions such as the proportions of cephalothorax, neck, trunk, abdomen, egg sacs, mouth parts (antenna, maxilla, maxillule), the distance between legs given by Boxshall (1986), Vidjak et al. (2008), Venmathi Maran et al. (2012), Moon and Choi (2014).

Rezumat:

PREZENȚA SPECIILOR *PENICULUS FISTULA FISTULA* ȘI *LEPEOPHTHEIRUS ACUTUS* ÎN NORDUL MĂRII EGEE, TURCIA

Copepodul parazit *Peniculus fistula fistula* Nordmann, 1832 a fost găsit în 2017 în Nordul Mării Egee, Turcia, pe specia *Belone belone* Linnaeus, 1760 (zărgan) în zonele caudală, ventrală, pectorală, dorsală, anală și aripioare, în timp ce *Lepeophtheirus acutus* Heegaard, 1943 pe specia *Rhinobatos rhinobatos* Linnaeus, 1758. Acest studiu prezintă o nouă locație pentru *Lepeophtheirus acutus* în Marea Egee și zărganul ca gazdă nouă pentru *Peniculus fistula fistula* Nordmann, 1832, în Turcia. Studiul confirmă a treia semnalare a lui *Peniculus fistula fistula* Nordmann, 1832, în Turcia.

Acknowledgements:

We would like to thank Halil Ataç, President of Altmoluk Fishermen's Union for obtaining fish material. First author also thanks Prof. Dr. Williams E.H. and Prof. Dr. Bunkley-Williams L for criticisms. This research was carried out by the authors' own facilities.

References:

- BOXSHALL G.A. (1986), A new genus and two new species of Pennellidae (Copepoda: Siphonostomatoida) and an analysis of evolution within the family, *Systematic Parasitology*, 8, 215-225, doi: 10.1007/BF00009890
- BOXSHALL G.A. (2018), The sea lice (Copepoda: Caligidae) of Moreton Bay (Queensland, Australia) with descriptions of thirteen new species. *Zootaxa*, 4398, 1. doi: 10.11646/zootaxa.4398.1.1
- BRIAN A. (1898), I. Catalogo di Copepodi parassiti dei pesci della Liguria, Atti della Società Ligustica di Scienze Naturali e Geografiche, 9, 5-31. (in Italian)
- BRIAN A. (1906), Copepodi parassiti dei pesci d'Italia, Genova, 190p, doi: 10.5962/bhl.title.58642. (in Italian)
- BRIAN A. (1917), Note sur Copepodes parasites provenant des Musee Oceanographique de Monaco, *Bulletin du Musée océanographique de Monaco*, 324-326, 1-8. (in French)
- CANDEIAS A. (1955), *Peniculus fistula* Nordman, On two new hosts Trachurus trachurus and Trachurus picturatus, *Notas e Estudos do Instituto de Biologia Marítima, Lisboa*, 8, 1-16.
- CAPART A. (1959), Copepodes parasites: resultats scientifiques de l'expédition oceanographique Belge dans les eaux cotieres africaines de l'Atlantique Sud (1948-1949), *Bulletin de l'Institut Royal des Sciences Naturelles de Belgique*, 3, 55-126. (in French)
- CASTRO-ROMERO R., MONTES M.M., MARTORELLI S.R., SEPULVEDA D., TAPIA S., MARTINEZ-AQUINO A. (2016), Integrative taxonomy of *Peniculus*, *Metapeniculus*, and *Trifur* (Siphonostomatoida: Pennellidae), copepod parasites of marine fishes from Chile: species delimitation analyses using DNA barcoding and morphological evidence, *Systematics and Biodiversity*, 14, 5, 466-483, doi: 10.1080/14772000.2016.1158213.
- CLAUS C. (1868), Beobachtungen über Lernaecera, Peniculus and Lernaea, bin Beitrag zur Naturgeschichte der Lernaeen, Schriften der Gesellschaft zur Beförderung der gesammten Naturwissenschaften zu Marburg, Marburg und Leipzig, 1868, II, 32. (in German)
- DELAMARE DEBOUTTEVILLE C., NUNES-RUIVO L. (1951), Existence de "formes biologiques" chez *Peniculus fistula* (Rudolphi) (Copepoda), *Vie et Milieu*, 2, 448-458. (in French)
- FROESE R., PAULY D. (2019), FishBase, World Wide Web electronic publication. Available from: www.fishbase.org, (Accessed 08.2019).
- GOODING R.U. (1957), On some copepoda from Plymouth, mainly associated with invertebrates, including three new species, *Journal of the Marine Biological Association of the United Kingdom*, 36, 195-221, doi: 10.1017/S0025315400016714.
- HEEGAARD P. (1943), Some new caligids from the Gilbert Islands. *Arkiv för Zoologi*, A34, 1-12.
- HERMIDA M., CRUZ C., SARAIVA A. (2013a), Parasites as biological tags for stock identification of blackspot seabream, *Pagellus bogaraveo*, in Portuguese northeast Atlantic waters, *Scientia Marina*, 77, 4, 607-615, doi: 10.3989/scimar.03859.17A.
- HERMIDA M., CRUZ C., SARAIVA A. (2013b), Ectoparasites of the blackspot seabream *Pagellus bogaraveo* (Teleostei: Sparidae) from Portuguese waters of the north-east Atlantic, *Journal of the Marine Biological Association of the United Kingdom*, 93, 2, 503-510, doi: 10.1017/S0025315412000057
- HOBSON E.S. (1971), Cleaning symbiosis among California inshore fishes, *United States National Marine Fish Service Fish Bulletin*, 69, 491-523.
- KIK M.J.L., JANSE M., BENZ G.W. (2011), The sea louse *Lepeophtheirus acutus* (Caligidae, Siphonostomatoida, Copepoda) as a pathogen of aquarium-held elasmobranchs, *Journal of Fish Diseases*, 34, 793-799. doi: 10.1111/j.1365-2761.2011.01295.x
- LARRANETA M.G. (1964), Sobre la biología de *Pagellus erythrinus* (L.) especialmente del de las costas de Castellon, *Investigacion Pesquera*, 27, 121-146. (in Spanish)
- LOVE M.L., MOSER M. (1983), A checklist of parasites of California, Oregon, and

- Washington marine and estuarine fishes, *NOAA Technical Report NMFS SSRF-777*, 572p.
- MACGINITIE G.E. (1937), Notes on the natural history of several marine crustacea, *The American Midland Naturalist*, 18, 6, 1031-1037, doi: 10.2307/2420601.
- MOON M.S., CHOI S.H. (2014), Description of two species of *Peniculus* von Nordmann, 1832 (Copepoda: Siphonostomatoida: Pennellidae) parasitic on commercial fishes from Korea, including a new species, *Systematic Parasitology*, 88, 185-193, doi: 10.1007/s11230-014-9493-4
- NORDMANN A. (1832), Mikrographische Beiträge zur Naturgeschichte der wirbellosen Thiere, Berlin: Reumer G., 150. (in German)
- OLMO A.P., FERNANDEZ M., RAGA J.A., KOSTADINOVA A., POULIN R. (2008), Halfway up the trophic chain: development of parasite communities in the sparid fish *Boops boops*, *Parasitology*, 135, 257-268. doi: 10.1017/S0031182007003691
- ÖKTENER A. (2008), *Peniculus fistula* von Nordmann, 1832 (Copepoda: Pennellidae) parasitic on *Coryphaena hippurus* Linnaeus, 1758 (Teleostei: Coryphaenidae), *Reviews in Fisheries Science*, 16, 445-448, doi: 10.1080/10641260802046668
- ÖKTENER A., ALAŞ A., TÜRKER ÇAKIR D. (2015), First record of *Bomolochus bellones* Burmeister, 1833 (Copepoda : Bomolochidae) from Turkish marine habitats. *Vie et milieu - Life and environment* 65 (3), 1-4.
- ÖKTENER A., ŞİRİN M. (2019), Is *Peniculus fistula* Nordmann, 1832 reported on *Coryphaena hippurus* from Turkey?: With a New Host Record from the Sea of Marmara and Comments, Additions. *Transylvanian Review of Systematical and Ecological Research*, 21, 35-47.
- ÖZAK A.A., YANAR A., SAKARYA Y., BOXSHALL G.A. (2018), The discovery of *Lepeophtheirus acutus* Heegaard, 1943 (Copepoda: Caligidae) from two new elasmobranch hosts in the Mediterranean Sea, and a comparative redescription of *Lepeophtheirus rhinobati* Luque, Chaves et Cezar, 1998, *Acta Parasitologica*, 63(3), 454-473. doi: 10.1515/ap-2018-0055
- ÖZAK A.A., SAKARYA Y., BOXSHALL G.A. (2019), *Caligus adanensis* sp. nov. (Copepoda: Caligidae Burmeister, 1835) parasitic on garfish, *Belone belone* (Linnaeus, 1760), from the eastern Mediterranean Sea, off the Turkish coast, *Marine Biodiversity*, 49, 1877-1890.
- RAMDANE Z., TRILLES J.P. (2007), Parasitic copepods (Crustacea: Copepoda) from Algerian marine fishes, *Zootaxa*, 1574, 49-68.
- RODRIGUEZ-SANTIAGO M.A., MORALES-SERNA F.N., GOMEZ S., GRANOMALDONADO M.I. (2016). New records of parasitic copepods (Copepoda: Pandaridae, Eudactylinidae, Caligidae) on elasmobranchs (Chondrichthyes) in the Gulf of Mexico, *Ciencia Pesquera, número especial*, 24, 15-21
- SEPÚLVEDA F., MARIN S.L., CARVAJAL J. (2004), Metazoan parasites in wild fish and farmed salmon from aquaculture sites in southern Chile, *Aquaculture*, 235, 89-100, doi: 10.1016/j.aquaculture.2003.09.015
- SIKKEL P.C. (1985), Intraspecific cleaning by juvenile salema, *Xenestius californiensis* (Pisces: Haemulidae), *California Fish Game*, 72, 170-172.
- TANG D., VENMATHI MARAN B.A., MATSUMOTO Y., NAGASAWA K. (2013), Redescription of *Lepeophtheirus acutus* Heegaard, 1943 (Copepoda: Caligidae) parasitic on two elasmobranch hosts off Okinawa-jima Island, Japan, *Journal of Natural History*, 47:5-12, 581-596, doi: 10.1080/00222933.2012.738832
- VENMATHI MARAN B.A., MOON S.Y., OH S.Y., SOH H.Y., MYOUNG J.G. (2012) Redescription of two Pennellids (Copepoda, Siphonostomatoida) from Korea with a key to species of *Peniculus* von Nordmann, 1832, *ZooKeys*, 243, 1-14.
- VIDJAK O., ZORICA B., SINOV'ČIĆ G. (2008), First record of parasitic copepod *Peniculus fistula* von Nordmann, 1832 (Siphonostomatoida: Pennellidae) from garfish *Belone belone* (Linnaeus, 1761) in the Adriatic Sea, *Cahiers de Biologie Marine*, 49, 209-213.
- WILSON C.B. (1935), Parasitic copepods from the Pacific coast, *The American Midland Naturalist*, 16, 776-797, doi: 10.5479/si.00963801.35-1652.431.
- ZUNIGA L.R., SUAÚ P. (1967), Nota sobre la presencia de los copepods parasitos *Peniculus fistula* y *Lerneolophus sultanus* sobre dos nuevos huéspedes, *Lithognathus mormyrus* y *Boops boops*, *Investigacion Pesquera*, 3, 3, 485-487. (in Spanish)
- WoRMS Editorial Board (2019). World Register of Marine Species. Available from <http://www.marinespecies.org> at VLIZ. Accessed 2019-10-30. doi:10.14284/170

Annexes:

Figure no. 1 *Lepeophtheirus acutus* (left: male; right: female)



Figure no. 2 *Lepeophtheirus acutus* ♀: a) antennule (0.12 mm); b) antenna and postantennal process (0.12 mm); c) mandible (0.20 mm); d) maxilla (0.13 mm); e) maxilliped (0.11 mm); f) maxillule (0.27 mm); g) caudal ramus (0.07 mm); h) sternal furca (0.12 mm)

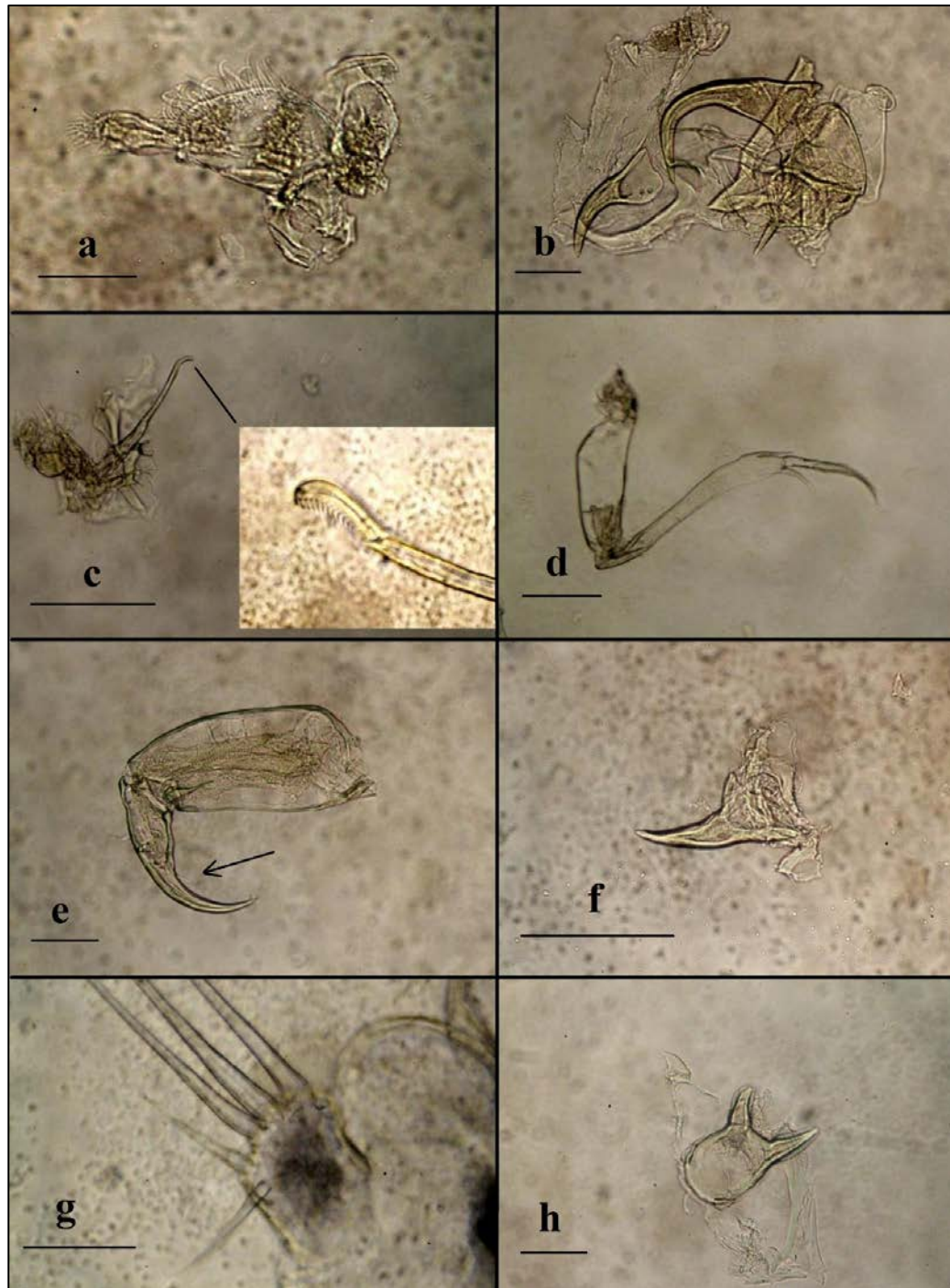


Figure no. 3 *Lepeophtheirus acutus* ♀: a) antennule (0.06 mm); b) antenna (0.06 mm); c) postantennal process (0.08 mm); d) maxillule (0.13 mm); e) sternal furca (0.12 mm); f) maxilliped (0.11 mm); g) maxilla (0.13 mm); h) caudal ramus (0.07 mm); i) fifth leg (0.03 mm)

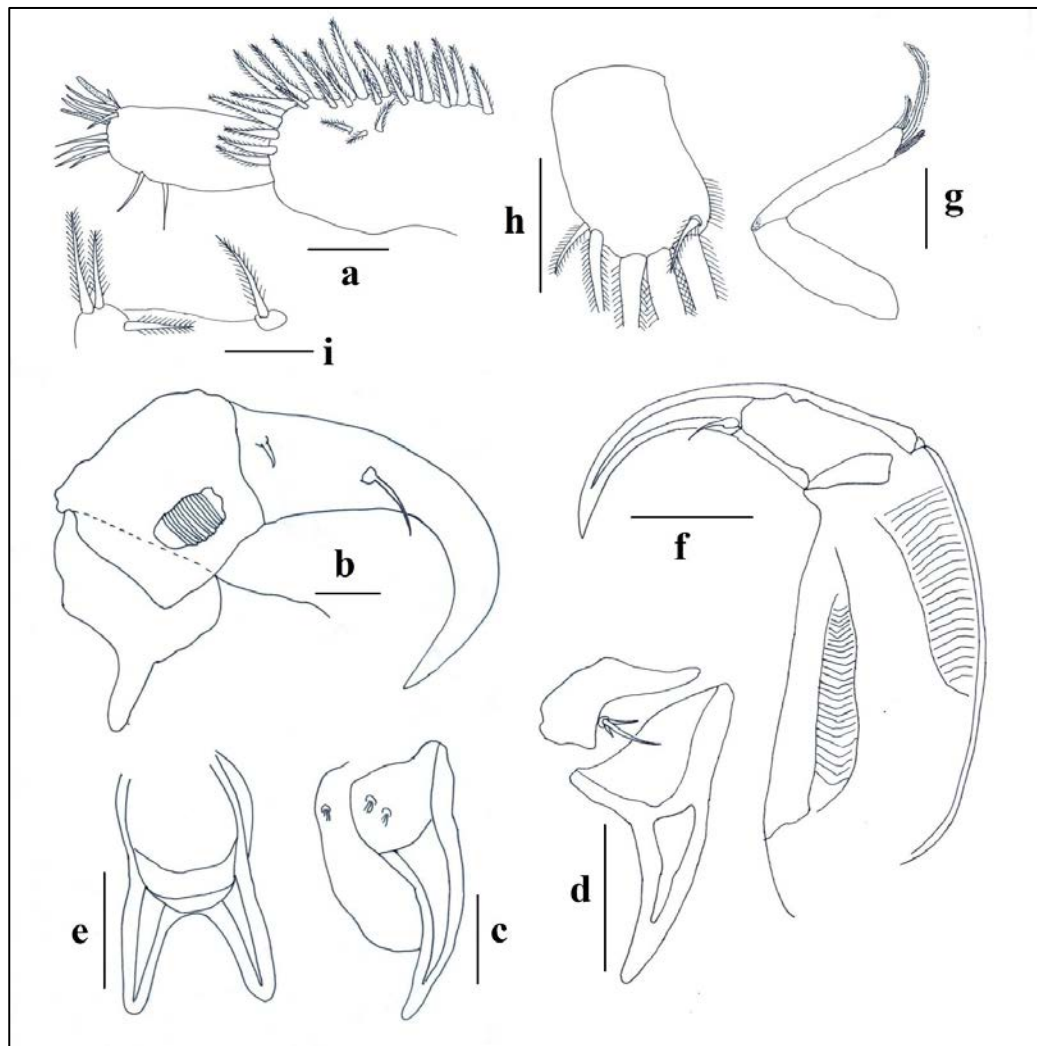


Figure no. 4 *Lepeophtheirus acutus* ♀: a) first leg (0.10 mm); b) exopod of first leg; c) second leg (0.07 mm); d) denticular ornamentation on outer margin of first endopodal segment of leg 2; e) fourth leg (0.11 mm); f) fifth leg (0.03 mm)

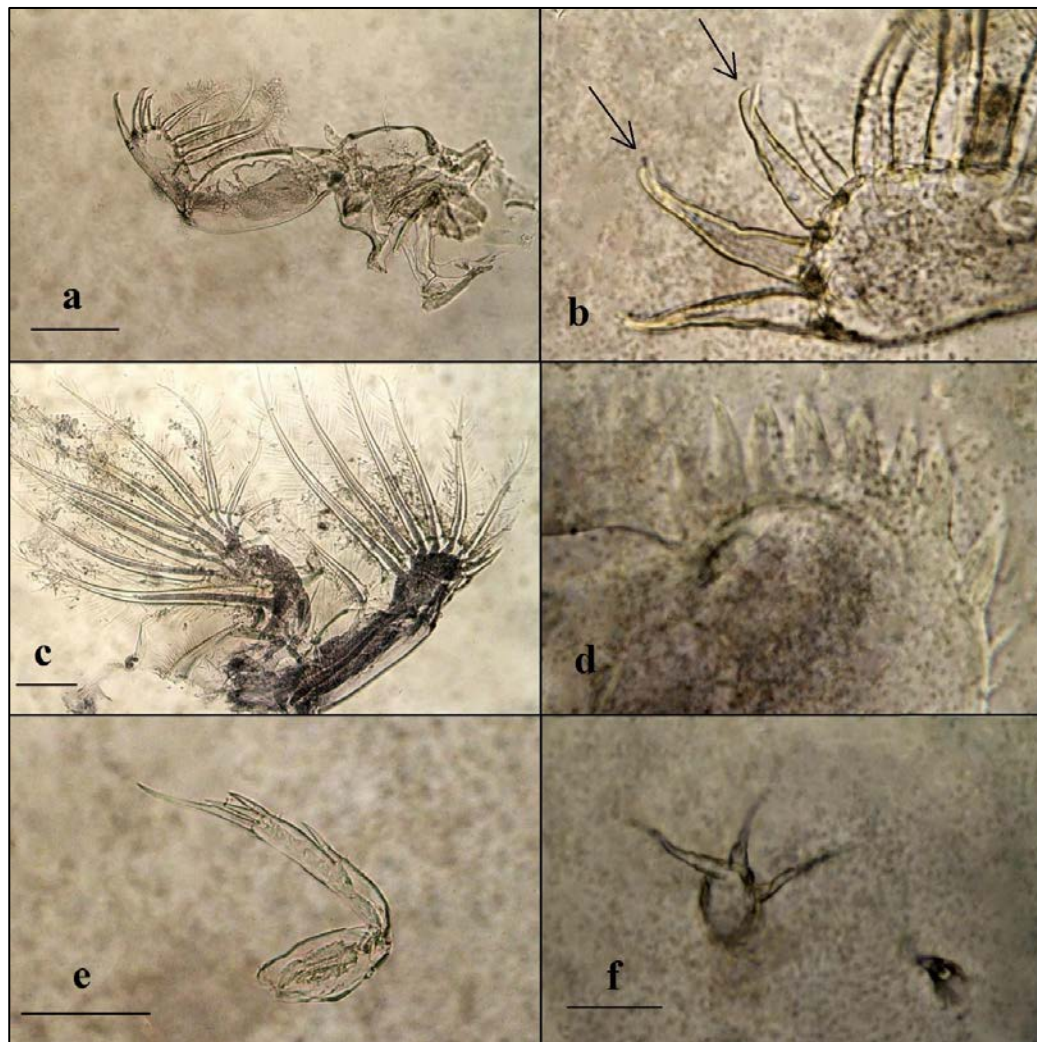


Figure no. 5 *Lepeophtheirus acutus* ♀: a) first leg (0.10 mm); b) second leg (0.07 mm); c) third leg (0.06 mm); e) fourth leg (0.07 mm); f) mandible (0.05 mm)

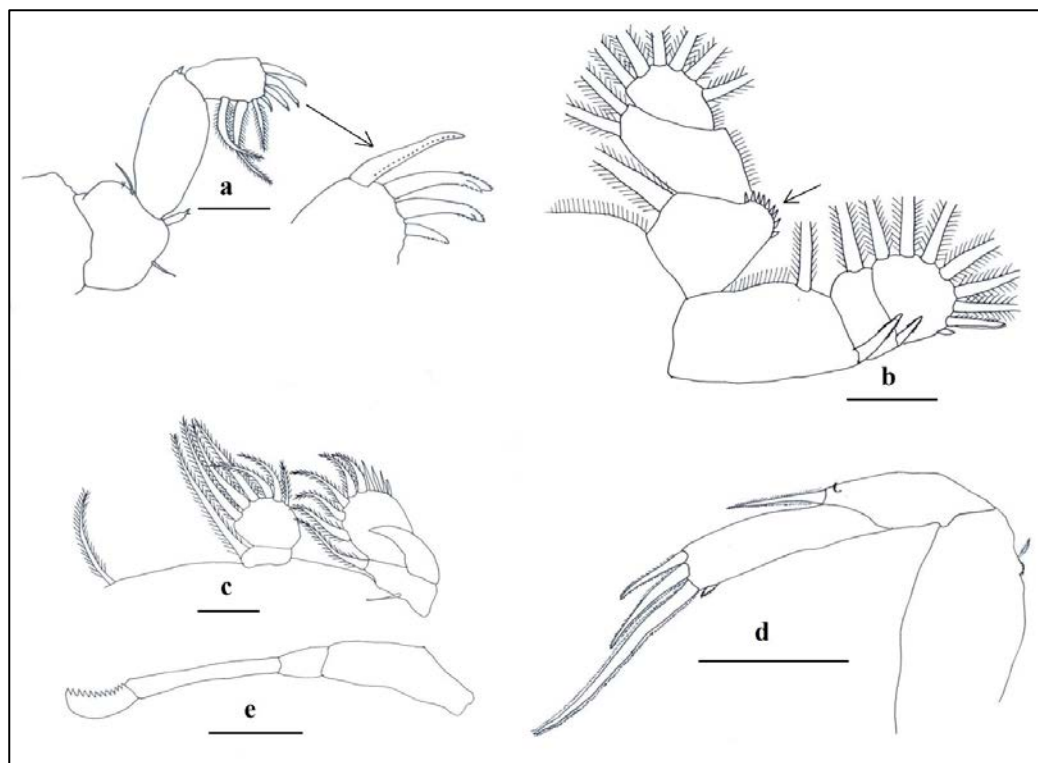


Figure no. 6 *Lepeophtheirus acutus* ♂: a) second antenna (0.10 mm); b) sternal furca (0.10 mm); c) maxillule (0.14 mm); d) fifth leg (0.15 mm)

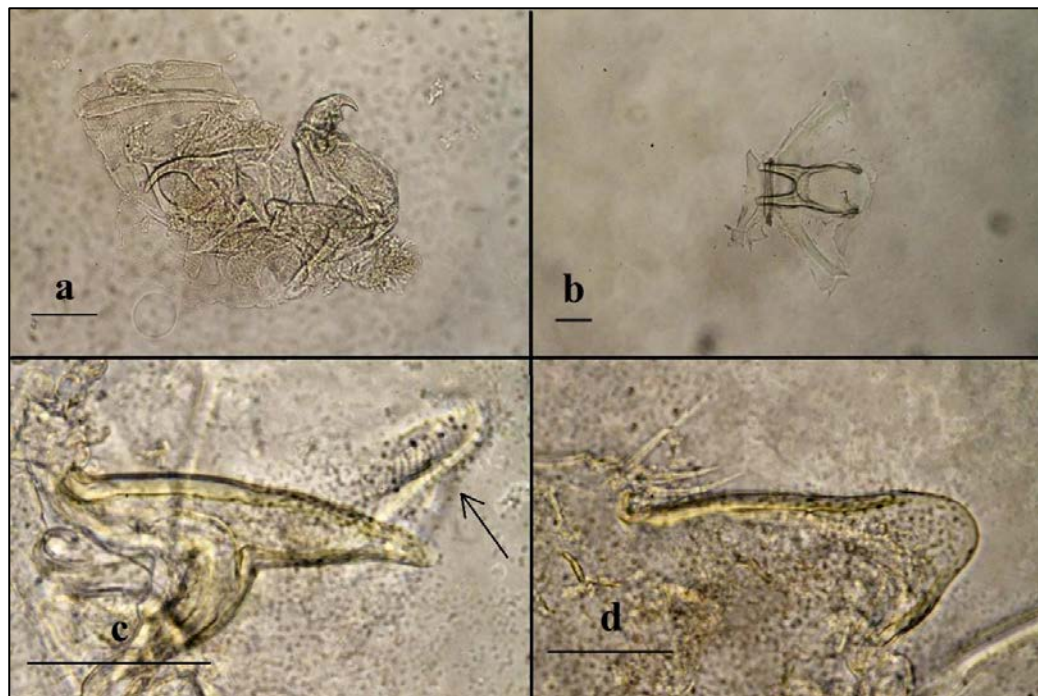


Figure no. 7 *Lepeophtheirus acutus* ♂: a) second antenna (0.05 mm); b) maxillule (0.14 mm); c) fifth leg (0.08 mm)

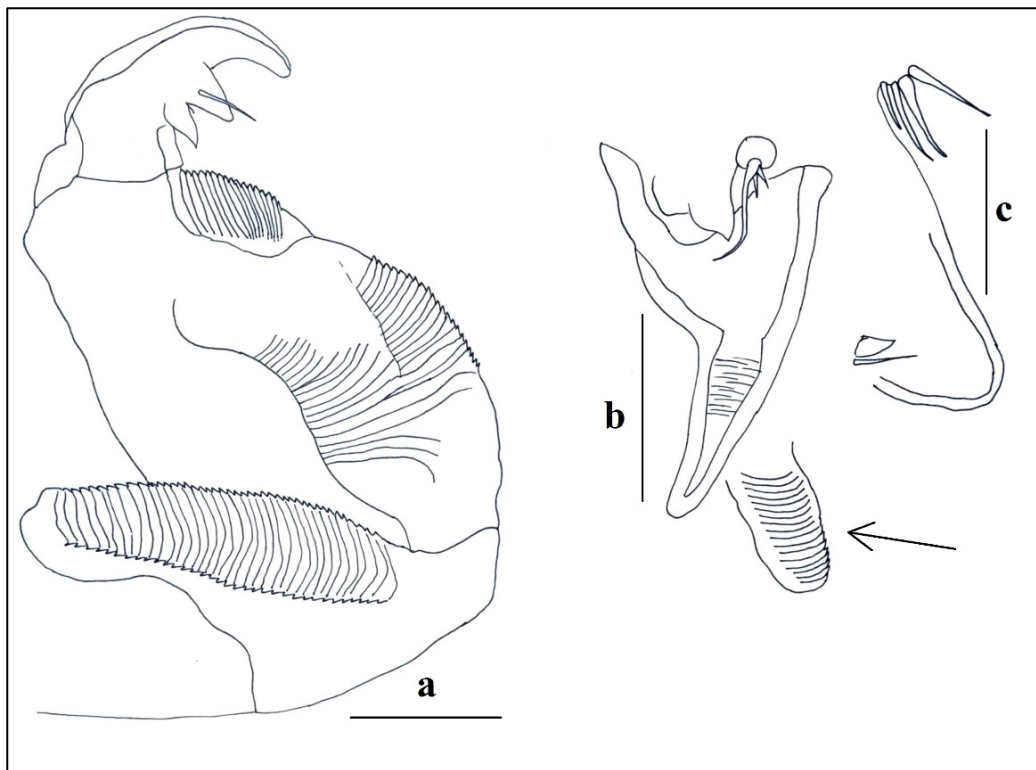


Figure no. 8 a) *Peniculus fistula fistula*; b, c, d) *Peniculus fistula fistula* on caudal fin of garfish; e, f) *Peniculus fistula fistula* on ventral fin of garfish

